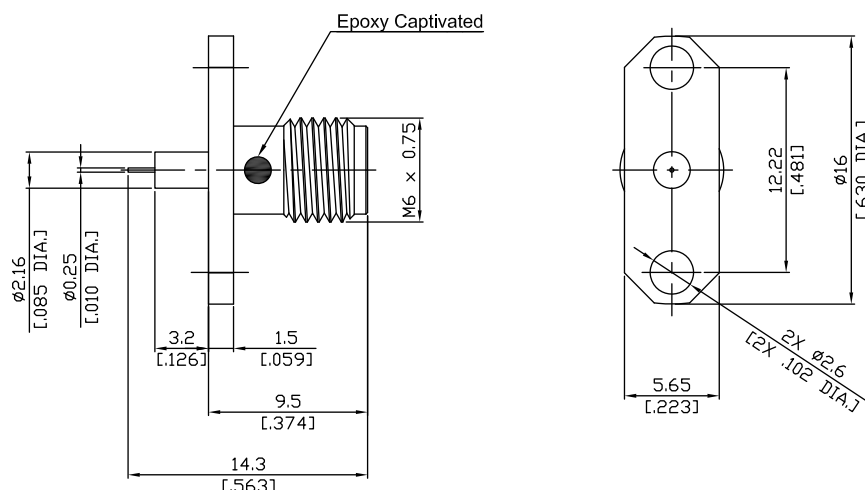
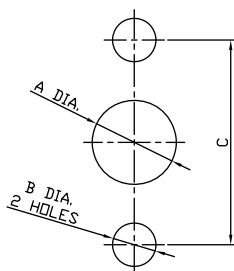


SMA Jack (Female) with M6 x 0.75 Threaded Connector
Solder Attachment 2 Hole Flange Mount Stub Terminal,
12.22mm (.481 inch) Hole Spacing Epoxy Captivated DC-18GHz VSWR1.30

M6-SMA2GTA50-1430A-EC / 9X



MOUNTING DIMENSIONS



	mm		inch	
	MAX.	MIN.	MAX.	MIN.
A	2.25	2.20	.089	.087
B	2.36	2.26	.093	.089
C	12.25	12.22	.482	.481

All dimensions are in mm [inch]

Tolerances according to DIN ISO 2768-mH

Interface

According to

IEC 61169-15; MIL-STD-348B/310

Electrical Data

Impedance

50 Ω

Frequency

DC to 18 GHz

VSWR (Return Loss)

≤ 1.30 (≥ 17.7 dB)

Insertion Loss

≤ 0.05 x √F (GHz) dB

Insulation Resistance

≥ 5 GΩ

Center Contact Resistance

≤ 3 mΩ

Outer Contact Resistance

≤ 2 mΩ

Test Voltage

1000 V rms

Working Voltage (at sea level)

480 V rms

Power Handling (at 20 °C, sea level, VSWR 1.0)

≤ 200 W @ 2 GHz

Material And Plating

Piece Parts	Material	Plating
Centre contact	Beryllium Copper	Gold plating, 3 μinch (Non-magnetic nickel-phosphorus underplating, 80 μinch)
Body	Stainless Steel	Passivated
Insulator	PTFE	

SMA Jack (Female) with M6 x 0.75 Threaded Connector
Solder Attachment 2 Hole Flange Mount Stub Terminal,
12.22mm (.481 inch) Hole Spacing Epoxy Captivated DC-18GHz VSWR1.30

M6-SMA2GTA50-1430A-EC / 9X

Mechanical Data

Coupling mechanisms	Screw-lock
Mating Cycles	≥ 500
Centre Contact	Soldered
Terminal Type	Stub
Captivated Type	Epoxy Captivated
Center Contact Captivation: axial	≥ 27 N
radial	≥ 3 Ncm
Coupling Test Torque	max. 1.7 Nm
Recommended Torque	0.8 Nm to 1.1 Nm

Environmental Data

Temperature Range	-65°C to +165°C
Thermal shock	MIL-STD-202, Meth. 107, Cond. B
Corrosion	MIL-STD-202, Meth. 101, Cond. B
Vibration	MIL-STD-202, Meth. 204, Cond. D
Shock	MIL-STD-202, Meth. 213, Cond. I
Moisture Resistance	MIL-STD-202, Meth. 106
RoHS	compliant

Packing

Single or 100